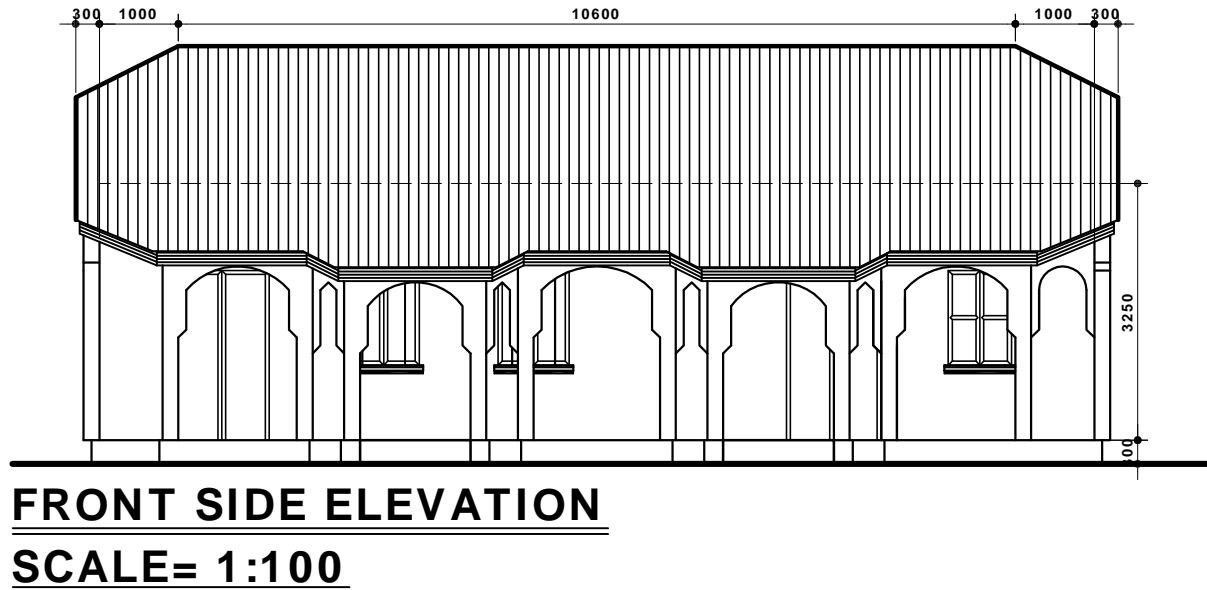
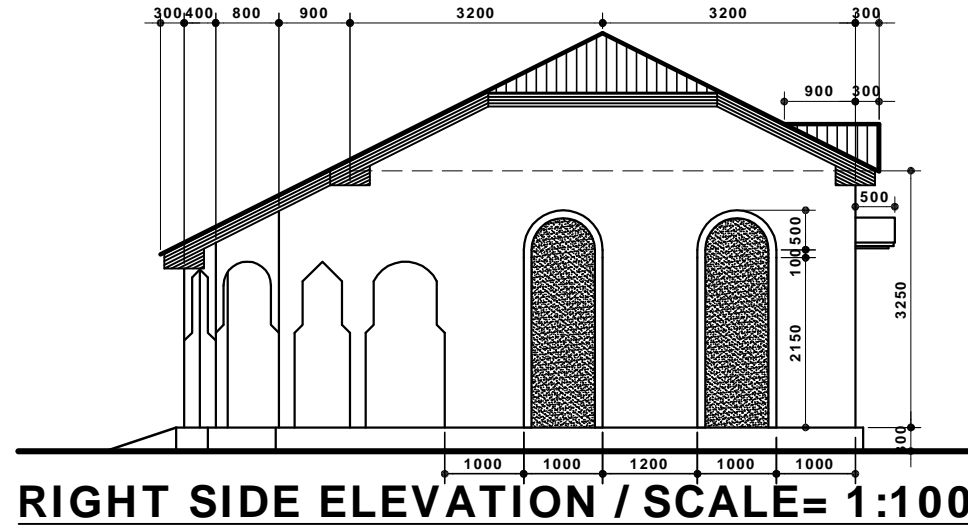


NEW CLASSROOMS & OFFICE SCHOOL BLOCK



1	PROJECT	DESIGN OF A CLASSROOM & OFFICE BLOCK
2	LOCATION	BURTINLE P.S. / BURTINLE TOWN / NUGAL
3	FUNDED BY	SCI / GAROWE OFFICE / PUNTLAND SOMALIA
4	OWNER	BURTINLE PRIMARY SCHOOL
5	DRAWING	FRONT & RIGHT SIDES ELEVATIONS / 1:100
6	DESIGNED BY	ENGINEER A/AZIZ OSMAN KITEH
7	DRAWN BY	IDEM / TEL. 0907740100
8	DATE	MAY 29 / 2020

CLASSROOM & OFFICE SCHOOL BLOCK
BURTINLE PRIMARY SCHOOL
BURTINLE TOWN / NUGAL / PUNTLAND